

Lockport City School District

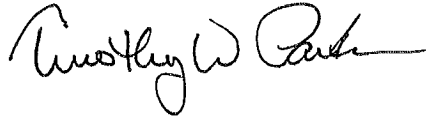
Board of Education
160 State Road, Lockport, New York 14094

(716) 478-4601
Fax: (716) 439-6541

Timothy W Parker
Director of Facilities and Operations III

TO: Deborah Coder

FROM: Timothy Parker



DATE: 07/16/2018

RE: Public Records Request Regarding Facial Recognition Technology

Specific Requests:

14. Alerts generated by the facial recognition technology will be stored on the computer consoles located in each building. It is recommended that by the provider that the system is set up to automatically delete these records after 30 days.

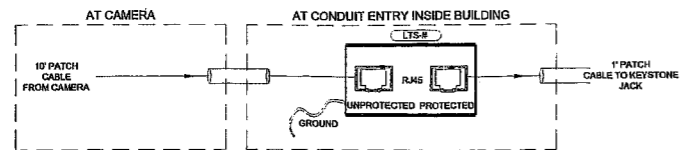
19. Attached is a Camera Hardware/License Schedule that lists the number of cameras by building that will be installed. All cameras will be located in the hallways and entrance area with exception of 2 cameras that will be in the High School gym area.

"Pride in Our Past; Faith in Our Future"

We believe: All people can learn. Schools create conditions for success: academically, socially, emotionally, physically, and aesthetically. Teaching and learning are the shared responsibilities of home, school, and community. Our mission is to assure comprehensive learning for all so that each person will be a lifelong learner.

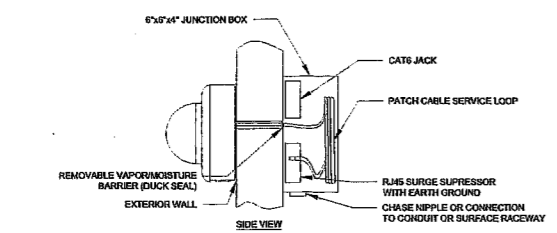
LCSD-000155

Lockport City School District 0115 Street Entrance Project 0115-0202 CAMERA INSTALLATION DETAILS
 Thursday, February 08, 2018 11:13:21 AM

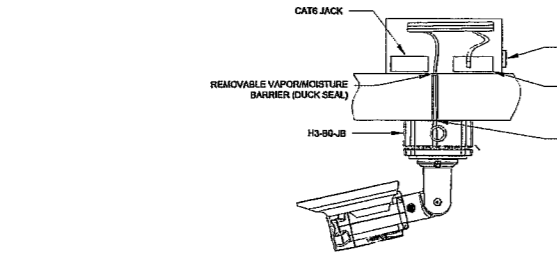


- LIGHTNING PROTECTION NOTES:**
- EACH SURGE PROTECTOR SHALL BE LOCATED CLOSE TO THE POINT OF ENTRY OF WIRING TRAVELING OUTSIDE OF BUILDING. PROTECTOR MUST BE BONDED TO GROUND PER NEC SECTION 90.100 BY GROUNDING METHODS. A GENERAL-PURPOSE TYPE ENCLOSURE SHALL BE PROVIDED FOR ALL SURGE PROTECTIVE DEVICES.
 - THESE DEVICES NOT INTENDED FOR DIRECT EXPOSURE TO THE ELEMENTS. USE A NEMA 4X ENCLOSURE OR SIMILAR FOR OUTDOOR APPLICATIONS.
 - SECURELY MOUNT THESE DEVICES BETWEEN THE FIELD WIRING AND THE EQUIPMENT TO BE PROTECTED WITH #8 SCREWS PROVIDED.
 - TO ALLOW THE SURGE PROTECTOR REACTION TIME, PROVIDE A MINIMUM OF 3-4 FT. OF CONDUCTOR LENGTH BETWEEN THE DISJUNCT AND THE EQUIPMENT TO BE PROTECTED. PROVIDE A GROUND CONNECTOR TO THE EARTH GROUND SHORTER THEN THE DISTANCE BETWEEN THE DISJUNCT AND THE EQUIPMENT.
 - CONNECT A MINIMUM OF #12 AWG WIRE FROM THE GROUND CONNECTOR TO THE EARTH GROUND W/ 25 OHMS OR LESS (5 OHMS PREFERRED). USE ONE COMMON GROUND PER SYSTEM TO ELIMINATE THE POSSIBILITY OF A DIFFERENCE IN GROUND POTENTIALS. ADDITION OF A GROUND ROD MAY BE REQUIRED.

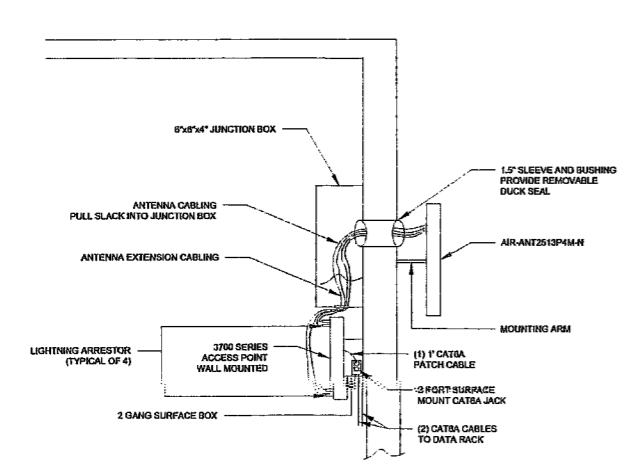
1 IP EXTERIOR CAMERA LIGHTNING SUPPRESSION WIRING
T-002 SCALE: NONE



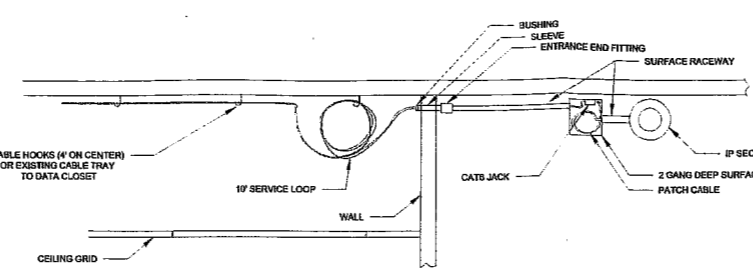
4 TYPICAL EXTERIOR WALL MOUNT DOME IP CAMERA INSTALLATION DETAIL
T-002 SCALE: NONE



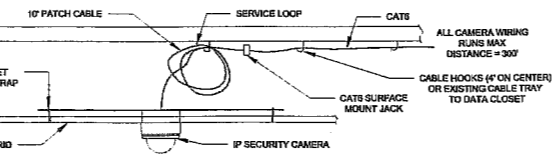
7 TYPICAL EXTERIOR CEILING MOUNT BULLET IP CAMERA INSTALLATION DETAIL
T-002 SCALE: NONE



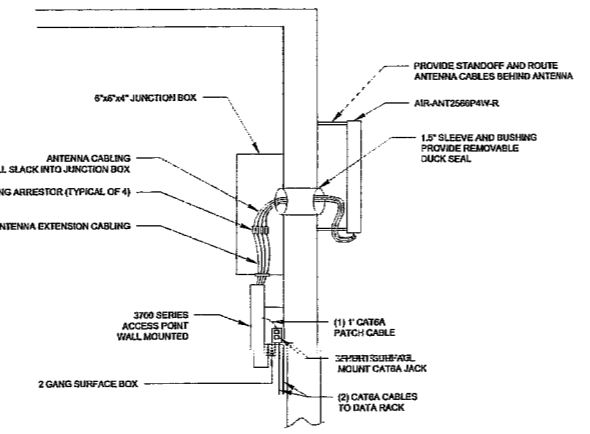
8 TYPICAL INTERIOR MOUNTED WAP WITH AIR-ANT2413P4M-N ANTENNA
T-002 SCALE: NONE



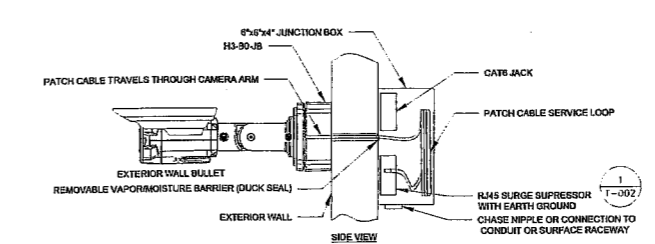
2 TYPICAL WALL IP CAMERA INSTALLATION DETAIL
T-002 SCALE: NONE



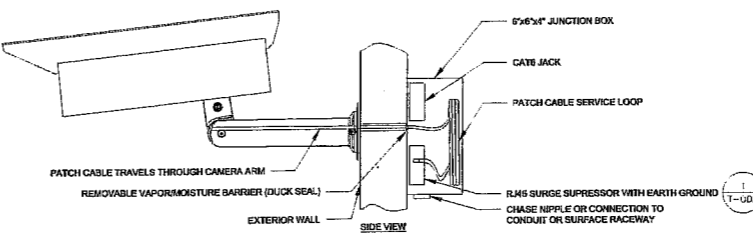
5 TYPICAL CEILING DOME IP CAMERA INSTALLATION DETAIL
T-002 SCALE: NONE



9 TYPICAL INTERIOR MOUNTED WAP WITH AIR-ANT2566P4W-R ANTENNA
T-002 SCALE: NONE



3 TYPICAL EXTERIOR WALL MOUNT BULLET IP CAMERA INSTALLATION DETAIL
T-002 SCALE: NONE



6 TYPICAL EXTERIOR WALL MOUNT IP CAMERA INSTALLATION DETAIL
T-002 SCALE: NONE

BUILDING	# OF NEW CAMERAS	# OF NEW SERVERS	NEW SNTCC LICENSES	ADDITIONAL PELCO LICENSES
RB KELLY	20	2	20	16
GEORGE SOUTHWARD	19	2	20	15
EMMET BELKNAP	38	4	40	30
JOHN POLND	11	2	12	9
ANNA MENRT	18	2	20	14
NORTH PARK	40	4	40	27
CHARLES UPSON	20	2	20	14
HIGH SCHOOL	71	5	75	54
HIGH SCHOOL WEST	16	2	16	11
ADMIN	10	1	10	8
SPARES	12	2	2	9
TOTALS	275	28	275	203

10 CAMERA HARDWARE/LICENSE SCHEDULE
T-002 SCALE: NONE

TRAUTMAN ASSOCIATES
ARCHITECTS & ENGINEERS

Consultants:
ECC TECHNOLOGIES, INC.
2136 FIVE MILE LINE ROAD
PENFIELD, NY, 14526
(585) 377-1850

Signature & Seal:

WARNING: ALTERATIONS TO THIS DOCUMENT NOT CONFORMING TO SECTION 200.2 OF NEW YORK STATE EDUCATION LAW, ARE PROHIBITED. NOT PUBLISHED. ALL RIGHTS RESERVED.

Client: LOCKPORT CITY SCHOOL DISTRICT
Project: SMART SCHOOLS PROJECT

SED No: DISTRICT WIDE: 10-04-00-01-7-099-007
Project Address: LOCKPORT, NEW YORK 14091

Drawing History: # Date Description
BD DOCUMENTS-09 FEBRUARY 2018

Project Status: FOR CONSTRUCTION
Date: 07 APRIL 2017
Project Number: 18015
Sheet Title: INSTALLATION DETAILS

Sheet Number: T-002