

## DHS Environmental Review for Costal Storm Evacuation Routes

---

Location ID # 55496034100: Hylan Blvd @ Sand Lane & Fingerboard W



Install camera and the tag reader on the City DOT owned street traffic light pole shown. The equipment will capture traffic at the intersection of Hylan Blvd at Sand Lane & W Fingerboard Rd. Power to the equipment will be supplied at the street light pole



## DHS Environmental Review for Costal Storm Evacuation Routes

---

Location ID # 53410031290: Hylan Blvd @ Guyon Ave



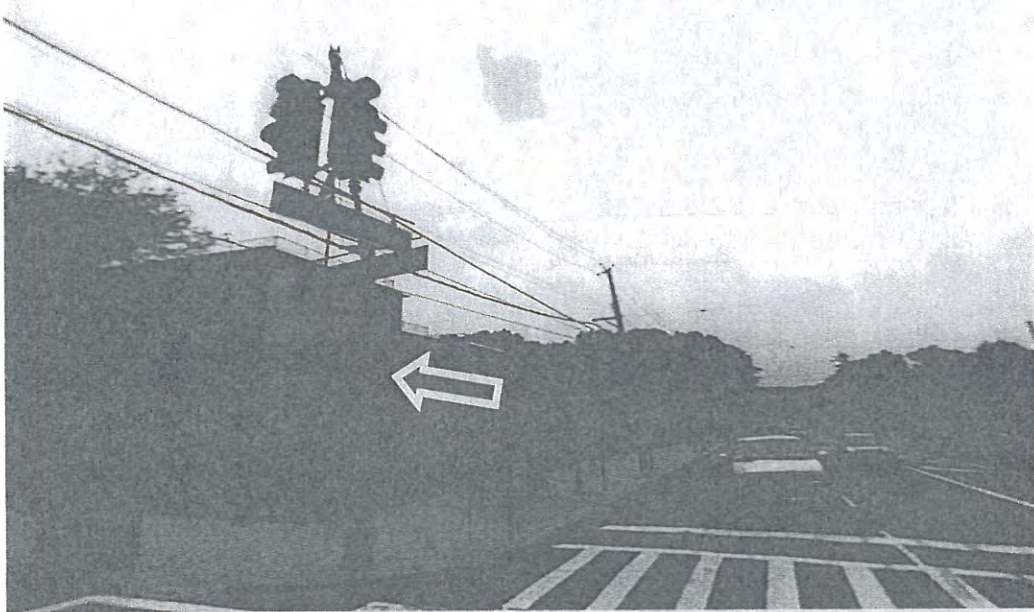
Install camera and the tag reader on the City DOT owned street traffic light pole shown. The equipment will capture traffic at the intersection of Hylan Blvd at Guyon Ave. Power to the equipment will be supplied at the street light pole



## DHS Environmental Review for Costal Storm Evacuation Routes

---

Location ID # 53410033650: Hylan Blvd @ Huguenot Ave



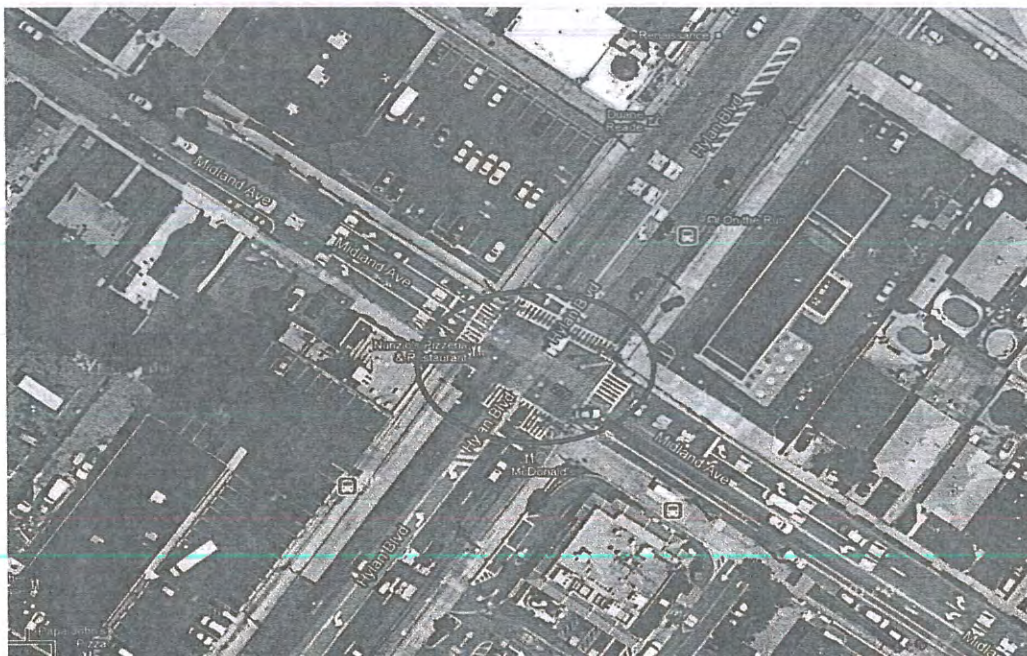
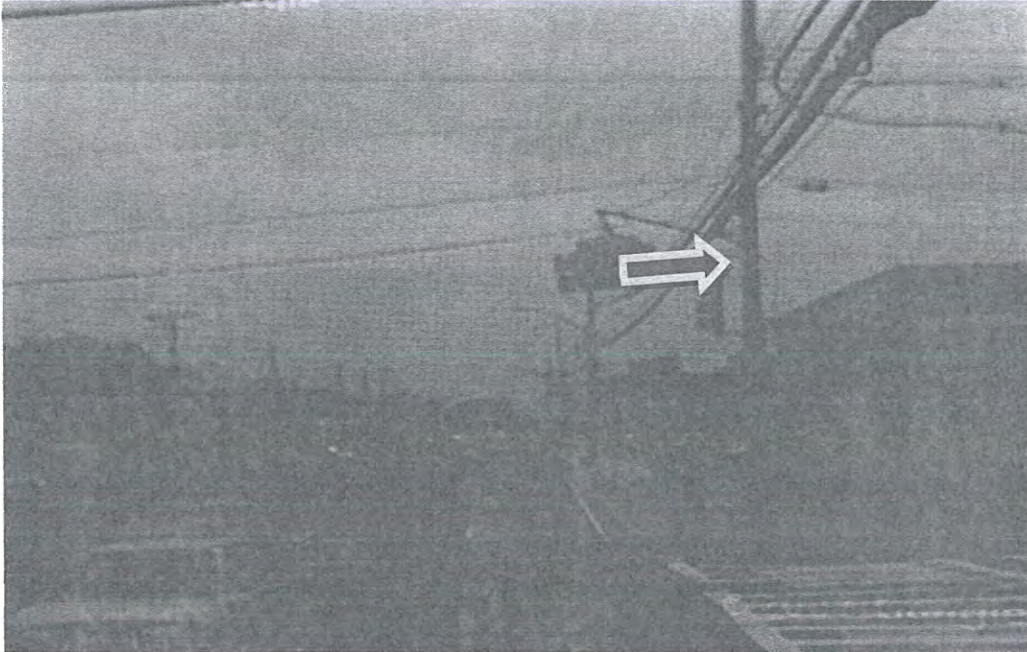
Install camera and the tag reader on the City DOT owned street traffic light pole shown. The equipment will capture traffic at the intersection of Hylan Blvd at Huguenot Ave. Power to the equipment will be supplied at the street light pole



## DHS Environmental Review for Costal Storm Evacuation Routes

---

Location ID # 53410039200: Hylan Blvd @ Midland Ave



Install camera and the tag reader on the City DOT owned street traffic light pole shown. The equipment will capture traffic at the intersection of Hylan Blvd at Midland Ave. Power to the equipment will be supplied at the street light pole



## DHS Environmental Review for Costal Storm Evacuation Routes

Location ID # 53410042450: Hylan Blvd @ Page Ave



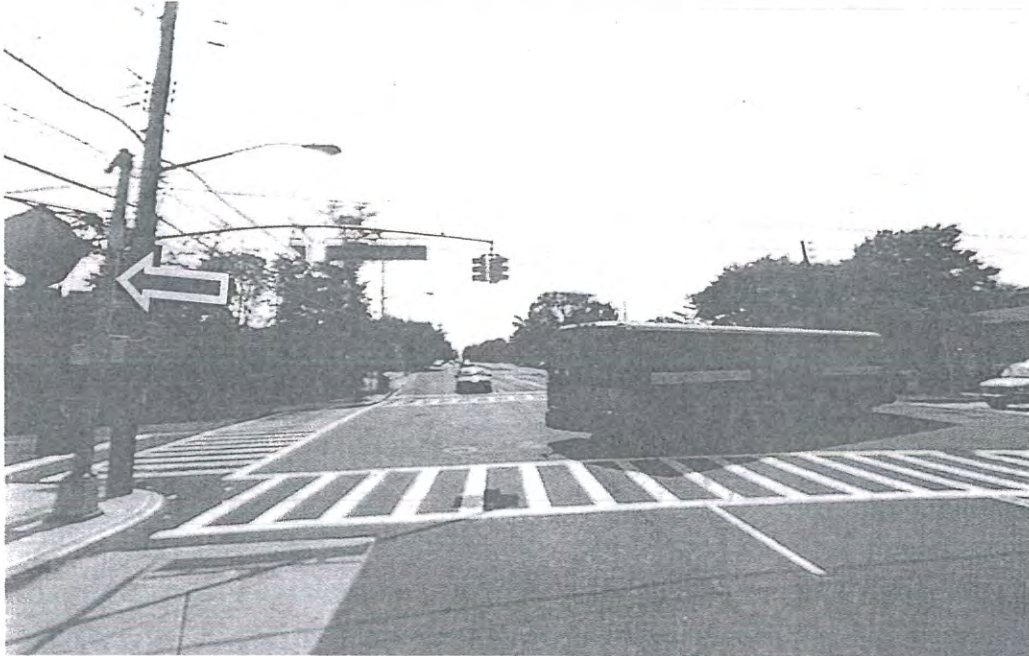
Install camera and the tag reader on the City DOT owned street traffic light pole shown. The equipment will capture traffic at the intersection of Hylan Blvd at Page Ave. Power to the equipment will be supplied at the street light pole



## DHS Environmental Review for Costal Storm Evacuation Routes

---

Location ID # 53410044750: Hylan Blvd @ Richmond Ave



Install camera and the tag reader on the City DOT owned street traffic light pole shown. The equipment will capture traffic at the intersection of Hylan Blvd at Richmond Ave. Power to the equipment will be supplied at the street light pole



## DHS Environmental Review for Costal Storm Evacuation Routes

Location ID # 53410047150: Hylan blvd @ Seaview Av

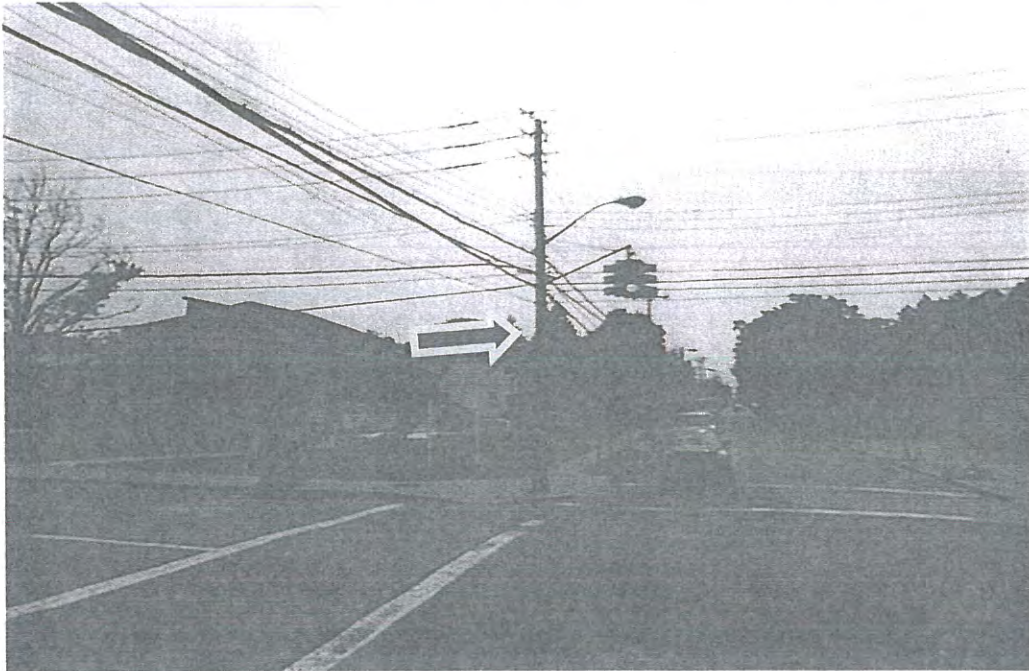


Install camera and the tag reader on the City DOT owned street traffic light pole shown. The equipment will capture traffic at the intersection of Hylan Blvd at Seaview Ave. Power to the equipment will be supplied at the street light pole



## DHS Environmental Review for Costal Storm Evacuation Routes

Location ID # 53410047300: Hylan Blvd @ Seguire Ave



Install camera and the tag reader on the City DOT owned street traffic light pole shown. The equipment will capture traffic at the intersection of Hylan Blvd at Seguire Ave. Power to the equipment will be supplied at the street light pole



## DHS Environmental Review for Costal Storm Evacuation Routes

---

Location ID # 53410017450: Hylan Blvd @ Lily pond Ave/Bay St



Install camera and the tag reader on the City DOT owned street traffic light pole shown. The equipment will capture traffic at the intersection of Hylan Blvd at Bay St (Lily Pond Ave). Power to the equipment will be supplied at the street light pole



## DHS Environmental Review for Costal Storm Evacuation Routes

Location ID # 31463067730: Ocean Parkway @ Ave U

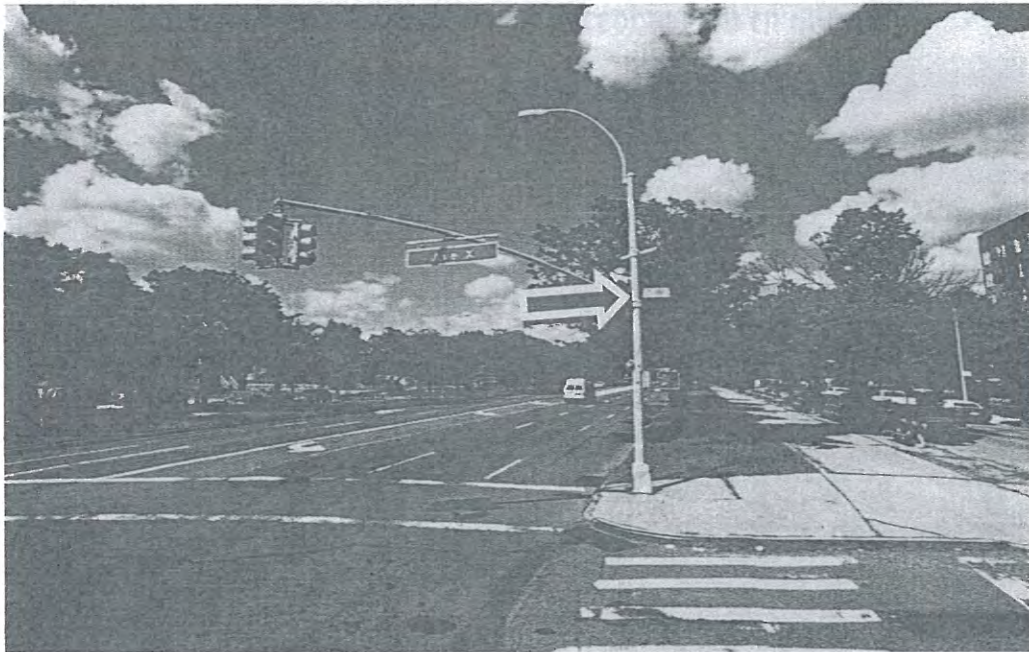


Install camera and the tag reader on the City DOT owned street traffic light pole shown. The equipment will capture traffic at the intersection of Ocean Parkway at Avenue U. Power to the equipment will be supplied at the street light pole



## DHS Environmental Review for Costal Storm Evacuation Routes

Location ID # 31478067730: Ocean Parkway @ Ave X

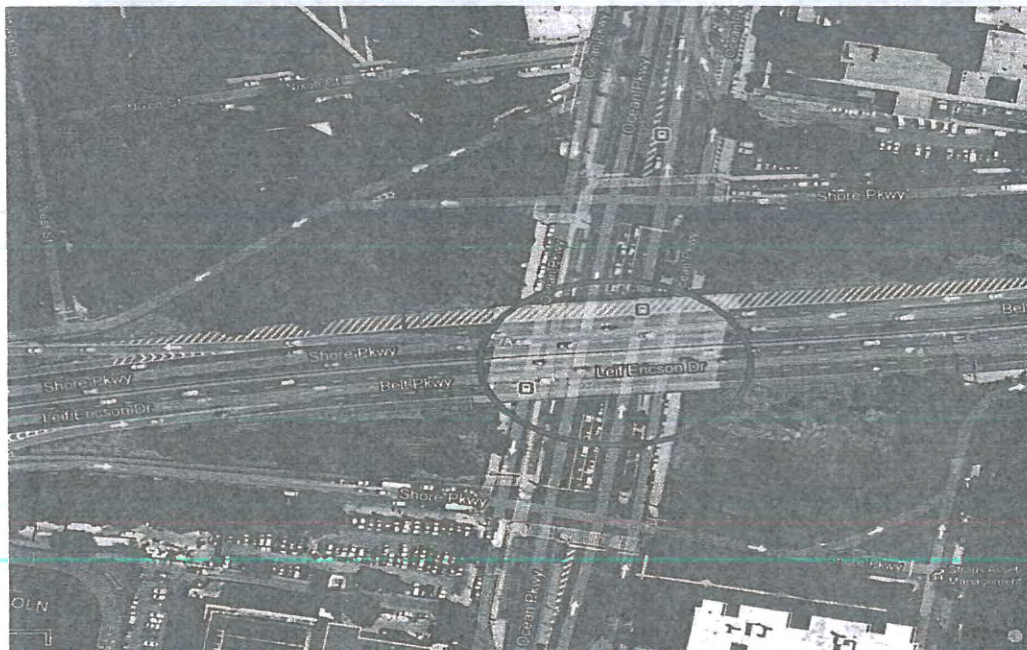
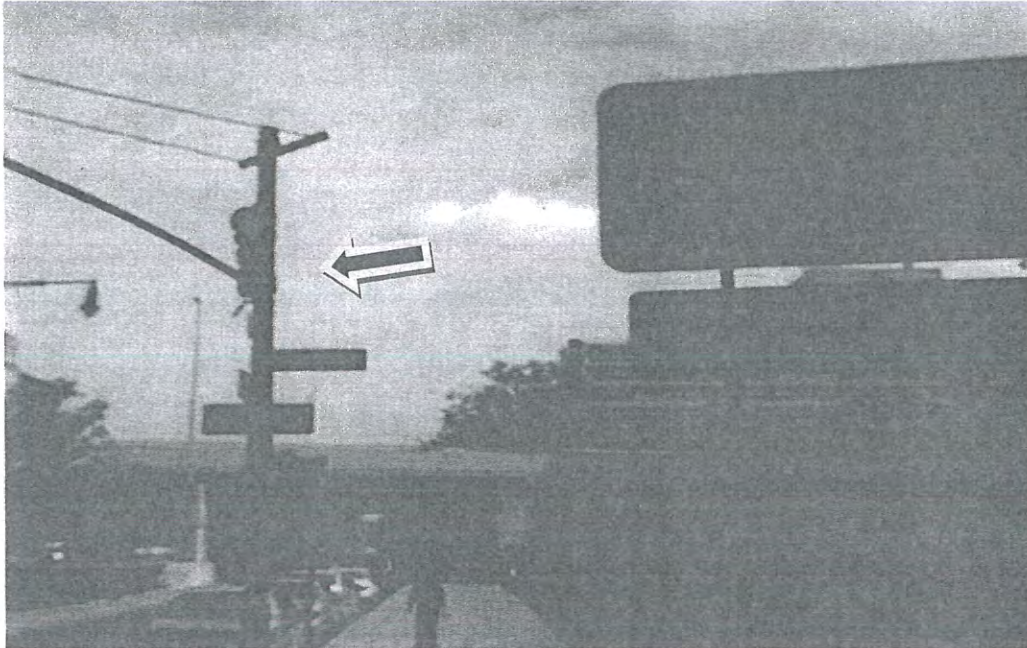


Install camera and the tag reader on the City DOT owned street traffic light pole shown. The equipment will capture traffic at the intersection of Ocean Parkway at Avenue X. Power to the equipment will be supplied at the street light pole



## DHS Environmental Review for Costal Storm Evacuation Routes

Location ID # 36773077030: Ocean parkway @ Shore Pkwy S S/R (Belt Pkwy)



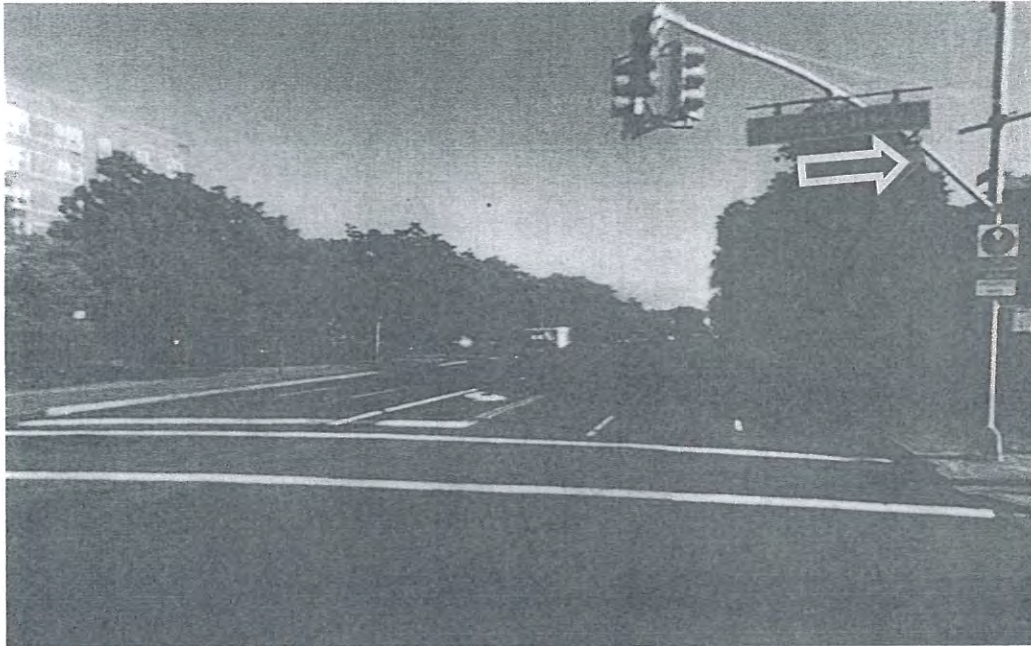
Install camera and the tag reader on the City DOT owned street traffic light pole shown. The equipment will capture traffic at the intersection of Ocean Parkway at Shore Parkway South Service Road. Power to the equipment will be supplied at the street light pole



## DHS Environmental Review for Costal Storm Evacuation Routes

---

Location ID # 34093054050: Ocean Parkway @ Kings Highway

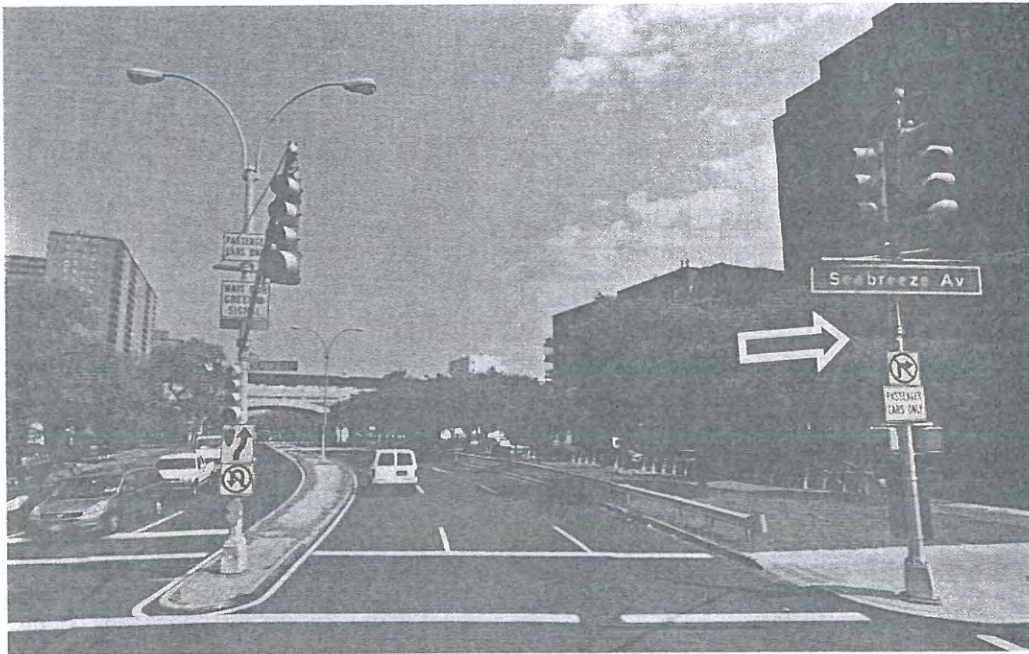


Install camera and the tag reader on the City DOT owned street traffic light pole shown. The equipment will capture traffic at the intersection of Ocean Parkway at Kings Highway. Power to the equipment will be supplied at the street light pole



## DHS Environmental Review for Coastal Storm Evacuation Routes

Location ID # 36773075830: Ocean parkway @ Surf Ave

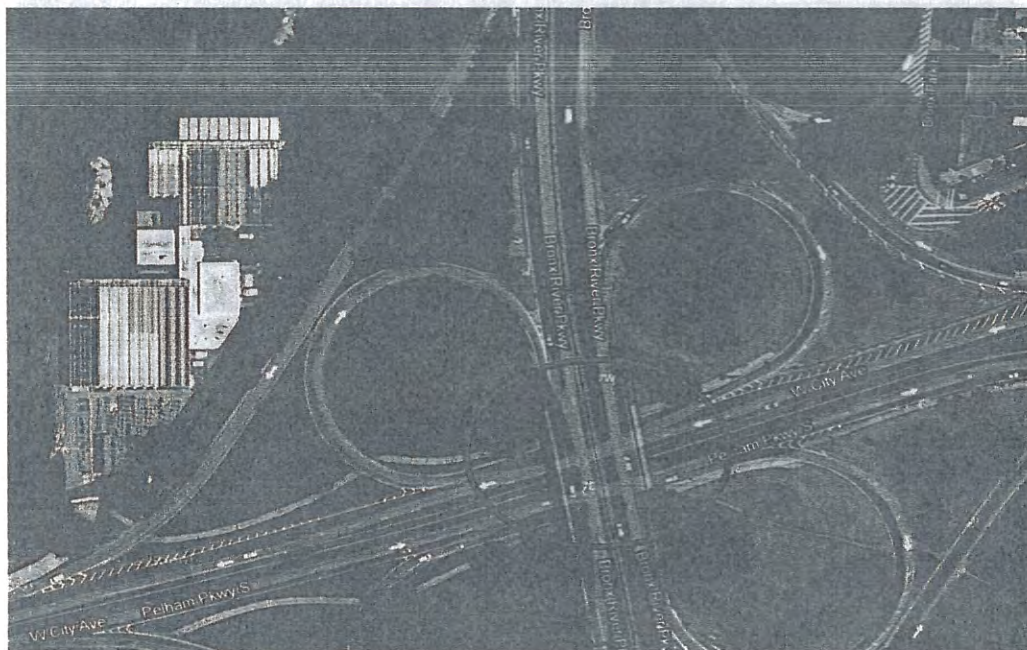


Install camera and the tag reader on the City DOT owned street traffic light pole shown. The equipment will capture traffic at the intersection of Ocean Parkway at Surf Avenue. Power to the equipment will be supplied at the street light pole



## DHS Environmental Review for Costal Storm Evacuation Routes

Location ID # 31282057710: Pelham Pkwy @ Boston Road ( Bronx River Parkway)



Install camera and the tag reader on the City DOT owned street traffic light pole shown. The equipment will capture traffic at the intersection of Pelham Parkway at Boston Rd (Bronx River Parkway). Power to the equipment will be supplied at the street light pole



## DHS Environmental Review for Costal Storm Evacuation Routes

---

Location ID # 21952557870 Pelham Pkwy @ City Island Bridge (City Island Rd)

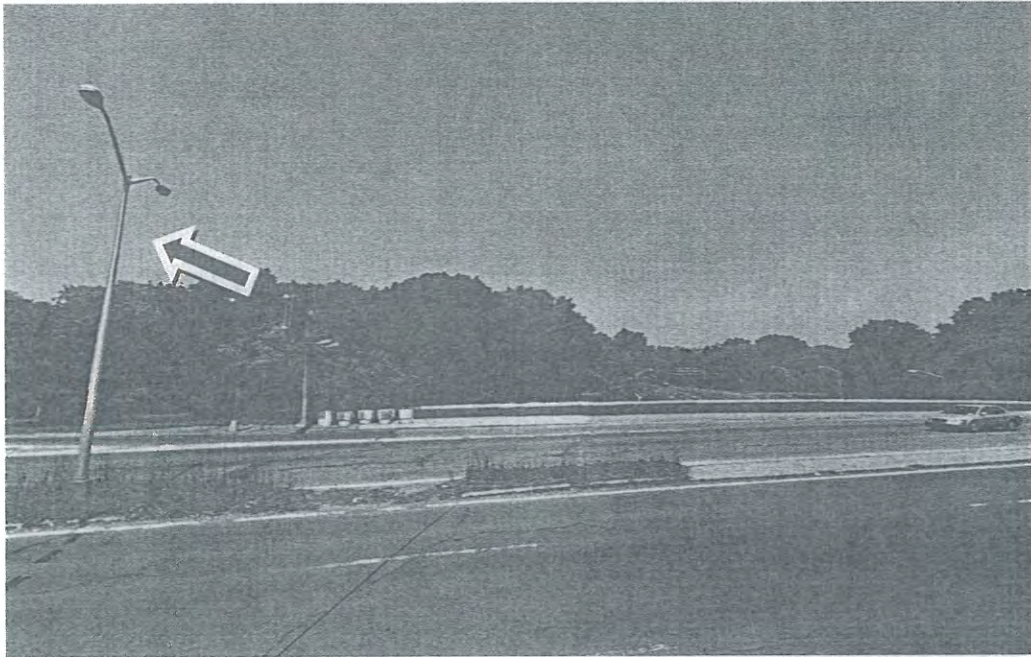


Install camera and the tag reader on the City DOT owned street traffic light pole shown. The equipment will capture traffic at the intersection of Pelham Parkway at City Island Road (City Island Bridge). Power to the equipment will be supplied at the street light pole



## DHS Environmental Review for Costal Storm Evacuation Routes

Location ID # 25771066860: Pelham Pkwy @ Stillwell Av (Hutchinson River Pkwy)

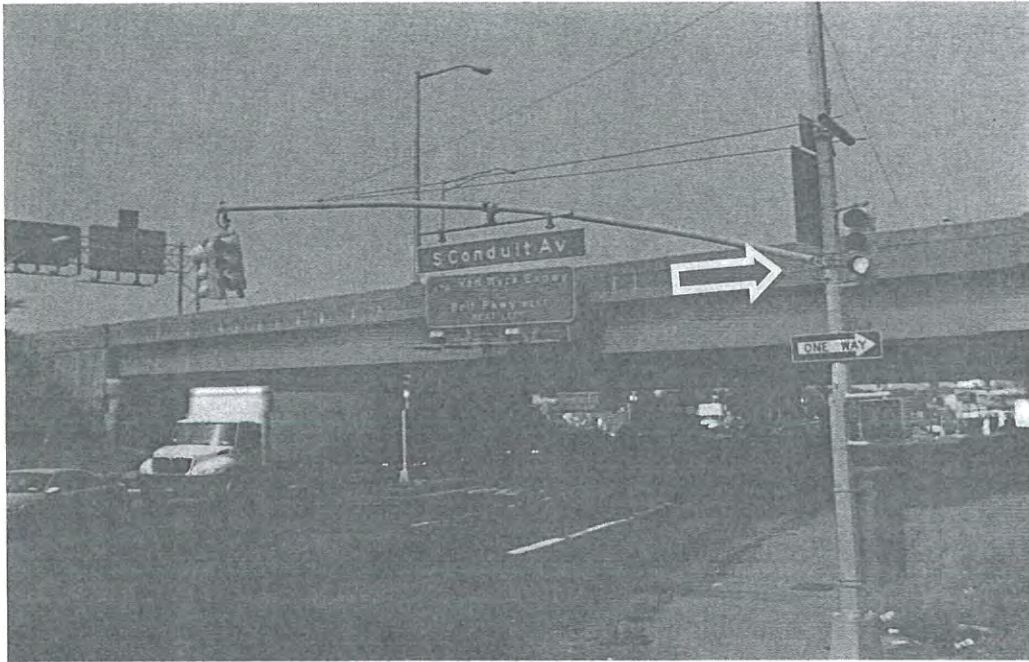


Install camera and the tag reader on the City DOT owned street traffic light pole shown. The equipment will capture traffic at the intersection of Pelham Parkway at Stillwell Av (Hutchinson River Parkway). Power to the equipment will be supplied at the street light pole



## DHS Environmental Review for Costal Storm Evacuation Routes

Location ID # 46289060810: Rockaway Blvd @ Belt Parkway (S Conduit Av)

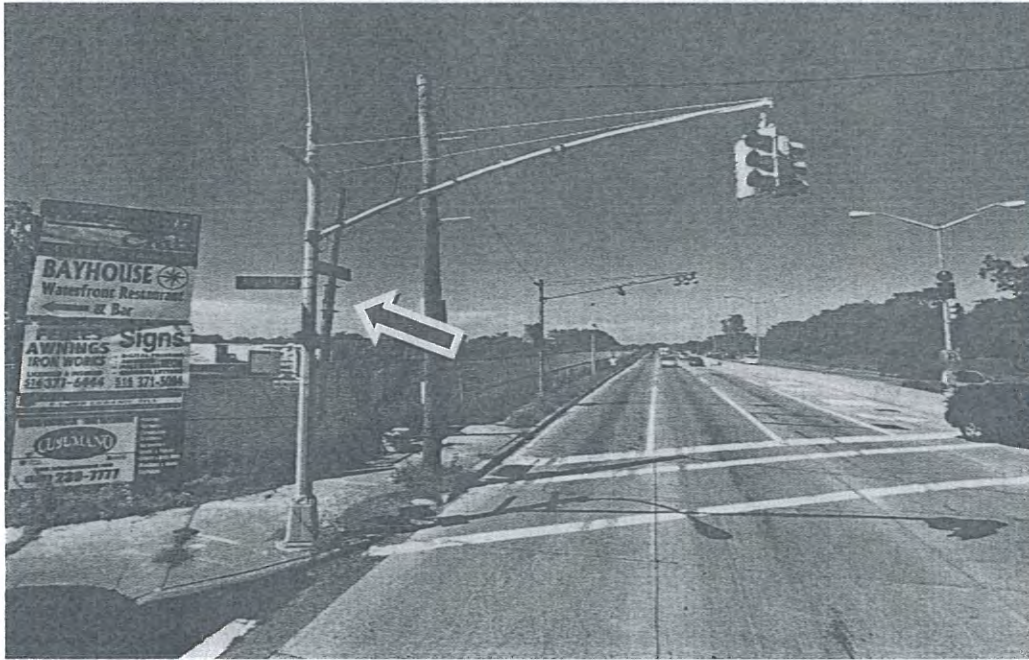


Install camera and the tag reader on the City DOT owned street traffic light pole shown. The equipment will capture traffic at the intersection of Rockaway Blvd at S Conduit Av (Belt Parkway). Power to the equipment will be supplied at the street light pole



## DHS Environmental Review for Costal Storm Evacuation Routes

Location ID # 43742060810: Rockaway blvd @ Brookville blvd



Install camera and the tag reader on the City DOT owned street traffic light pole shown. The equipment will capture traffic at the intersection of Rockaway Blvd at Brookville Blvd. Power to the equipment will be supplied at the street light pole



## DHS Environmental Review for Costal Storm Evacuation Routes

Location ID # 44469060810: Rockaway Blvd @ Nassau Expressway



Install camera and the tag reader on the City DOT owned street traffic light pole shown. The equipment will capture traffic at the intersection of Rockaway Blvd at Nassau Expressway. Power to the equipment will be supplied at the street light pole



## DHS Environmental Review for Costal Storm Evacuation Routes

Location ID # 46169029890: Seagirt Blvd @ B 9 ST

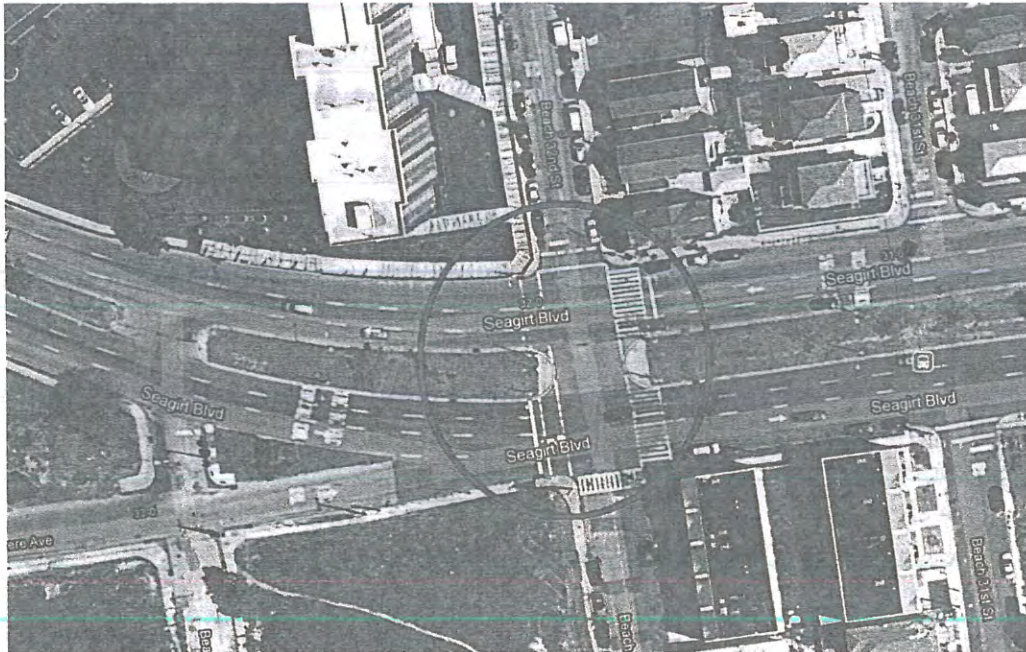
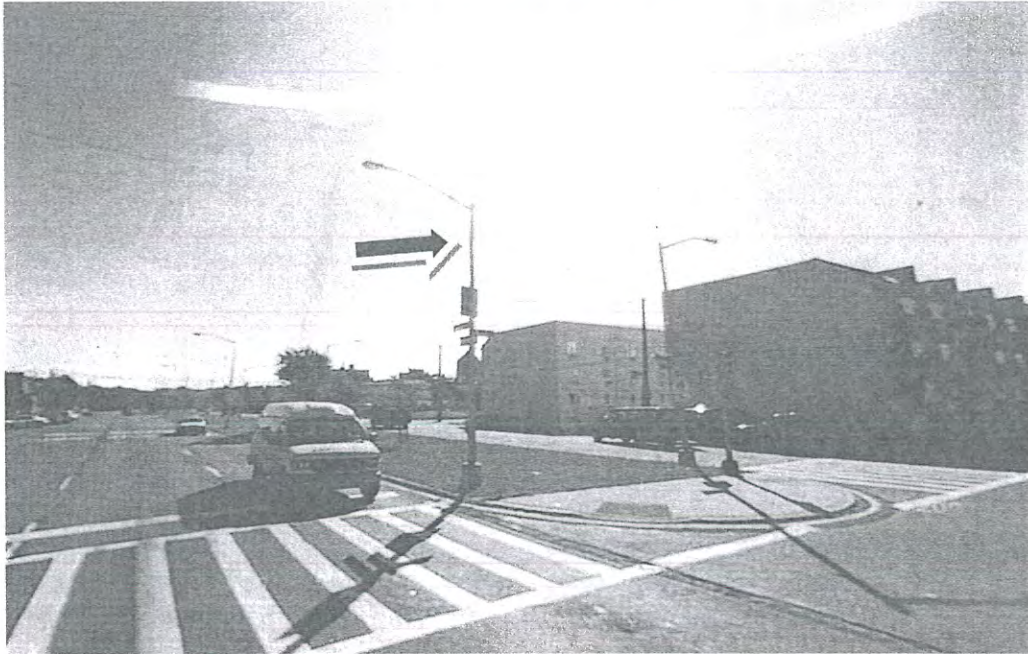


Install camera and the tag reader on the City DOT owned street traffic light pole shown. The equipment will capture traffic at the intersection of Seagirt Blvd at B 9 St. Power to the equipment will be supplied at the street light pole



## DHS Environmental Review for Costal Storm Evacuation Routes

Location ID # 46169000000: Seagirt Blvd @ B 32 St



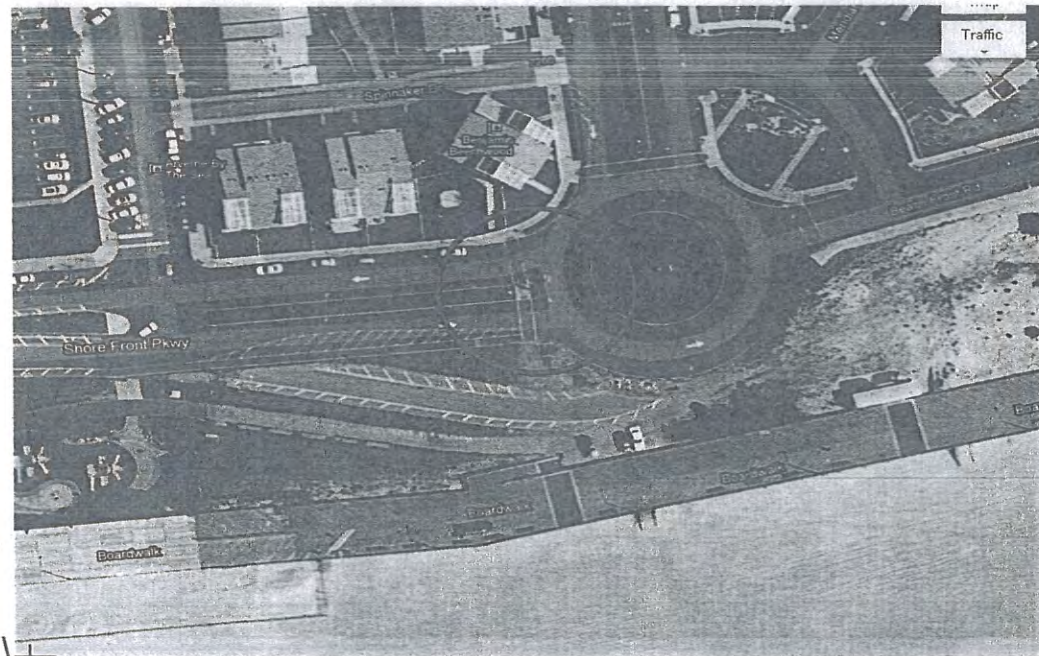
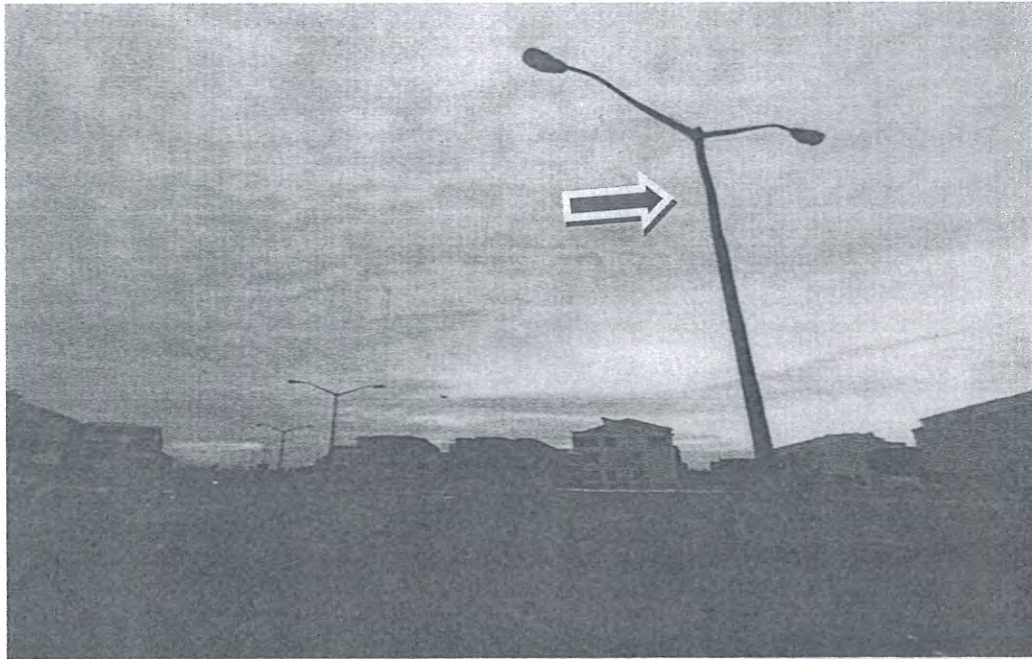
Install camera and the tag reader on the City DOT owned street traffic light pole shown. The equipment will capture traffic at the intersection of Seagirt Blvd at B 32 Street. Power to the equipment will be supplied at the street light pole



## DHS Environmental Review for Costal Storm Evacuation Routes

---

Location ID # 43301062200: Shore Front Parkway @ B 73 St

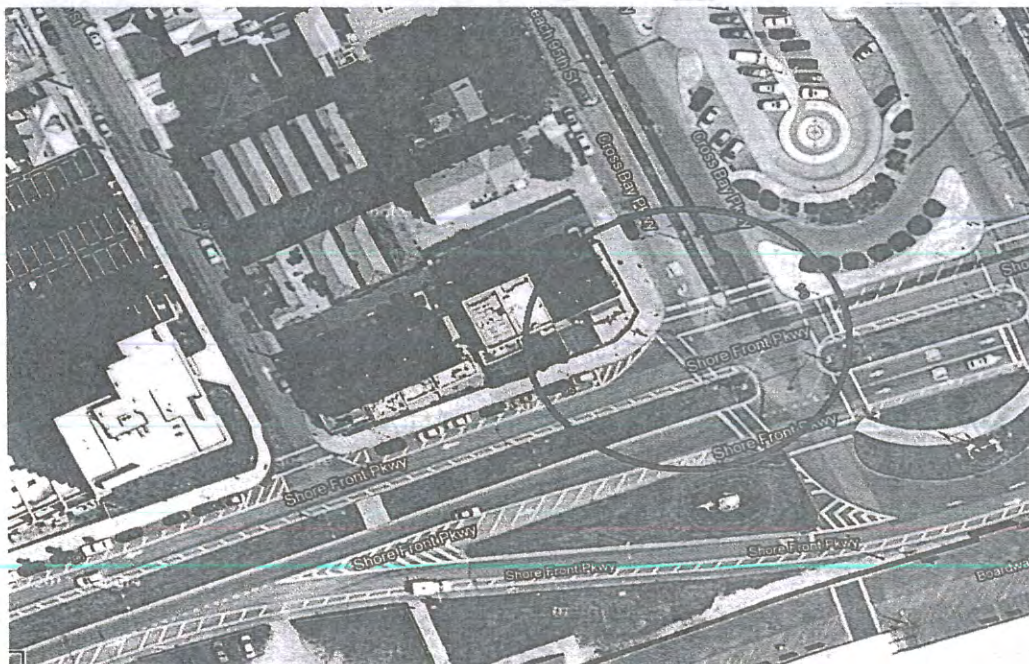


Install camera and the tag reader on the City DOT owned street light pole shown. The equipment will capture traffic at the intersection of Shore Front Parkway at B 73 Street. Power to the equipment will be supplied at the street light pole



## DHS Environmental Review for Costal Storm Evacuation Routes

Location ID # 43324062200: Shore Front Parkway @ B 95 St

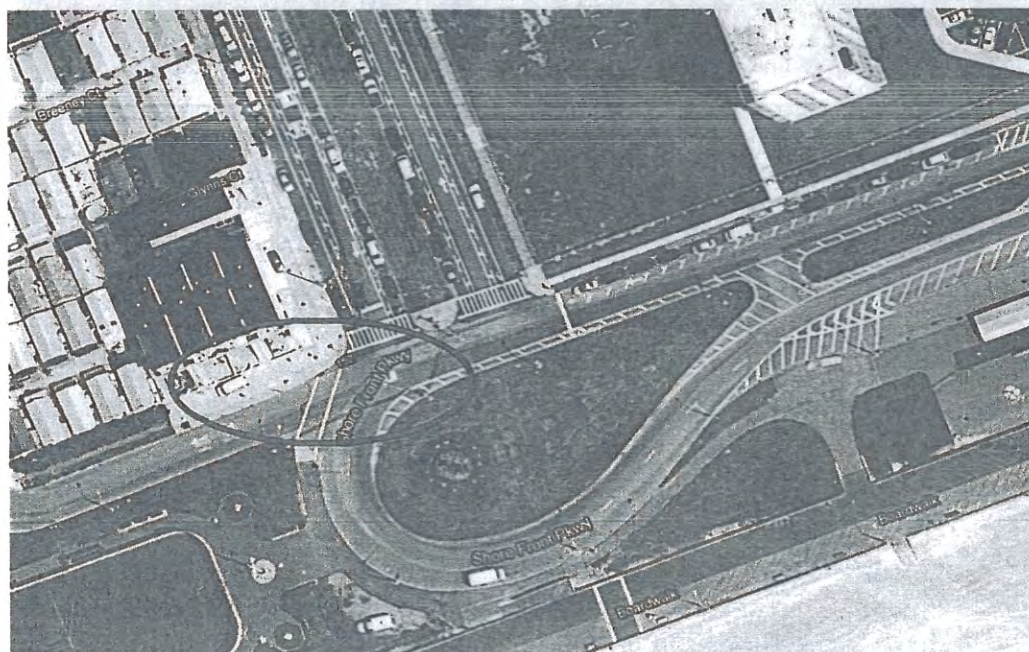


Install camera and the tag reader on the City DOT owned street traffic light pole shown. The equipment will capture traffic at the intersection of Shore Front Parkway at B 95 Street. Power to the equipment will be supplied at the street light pole.



## DHS Environmental Review for Costal Storm Evacuation Routes

Location ID # 43372062200: Shore Front Parkway @ B 108 St

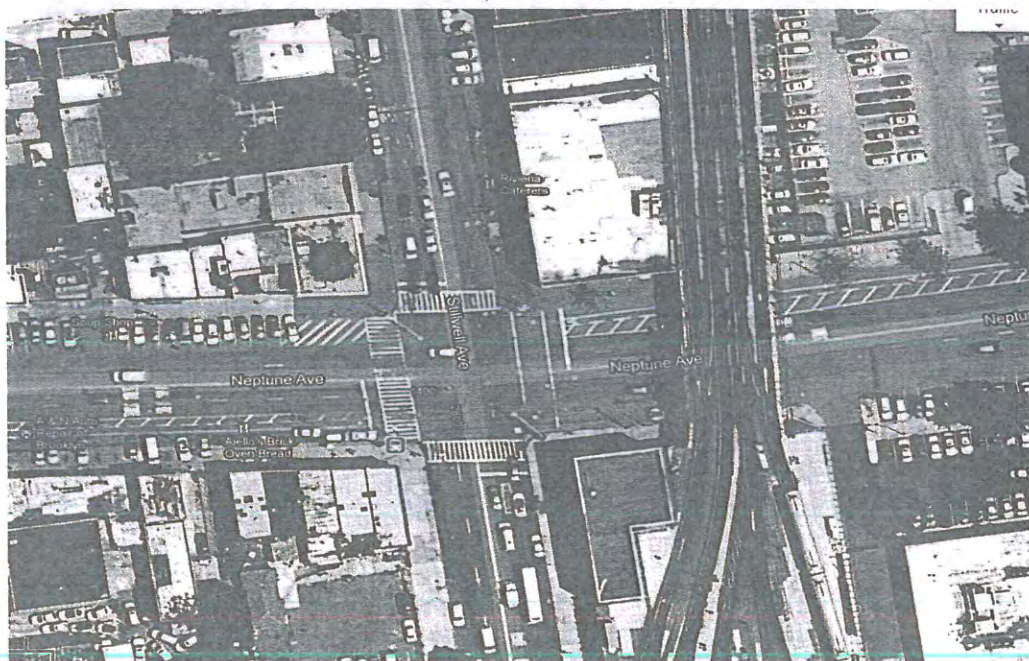
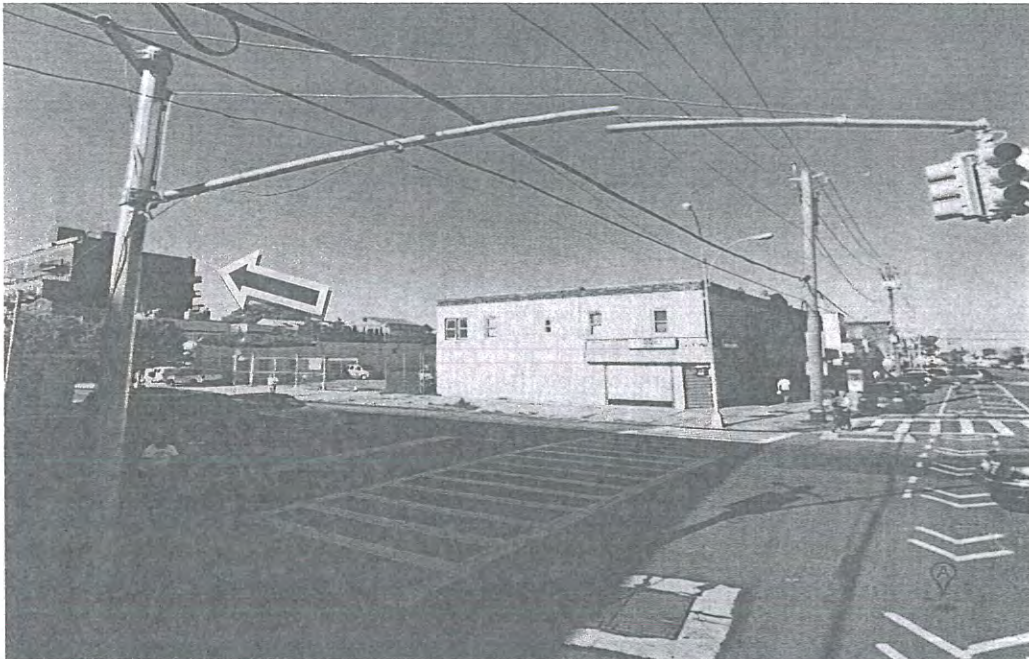


Install camera and the tag reader on the City DOT owned street traffic light pole shown. The equipment will capture traffic at the intersection of Shore Front Parkway at B 108 Street. Power to the equipment will be supplied at the street light pole



## DHS Environmental Review for Costal Storm Evacuation Routes

Location ID # 36423081830: Stillwell Ave @ Neptune Ave

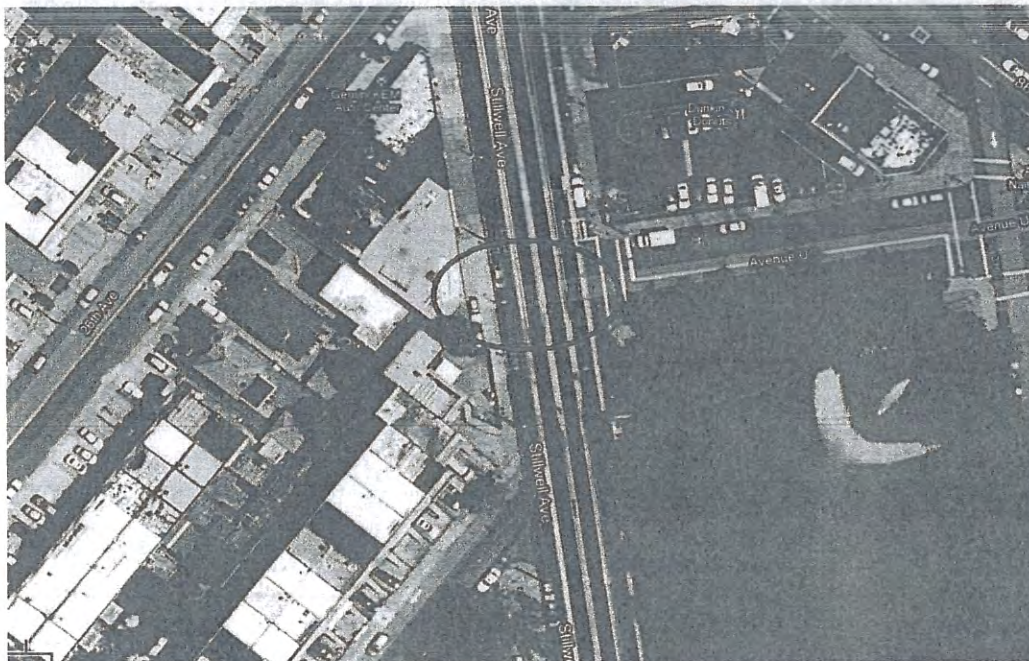
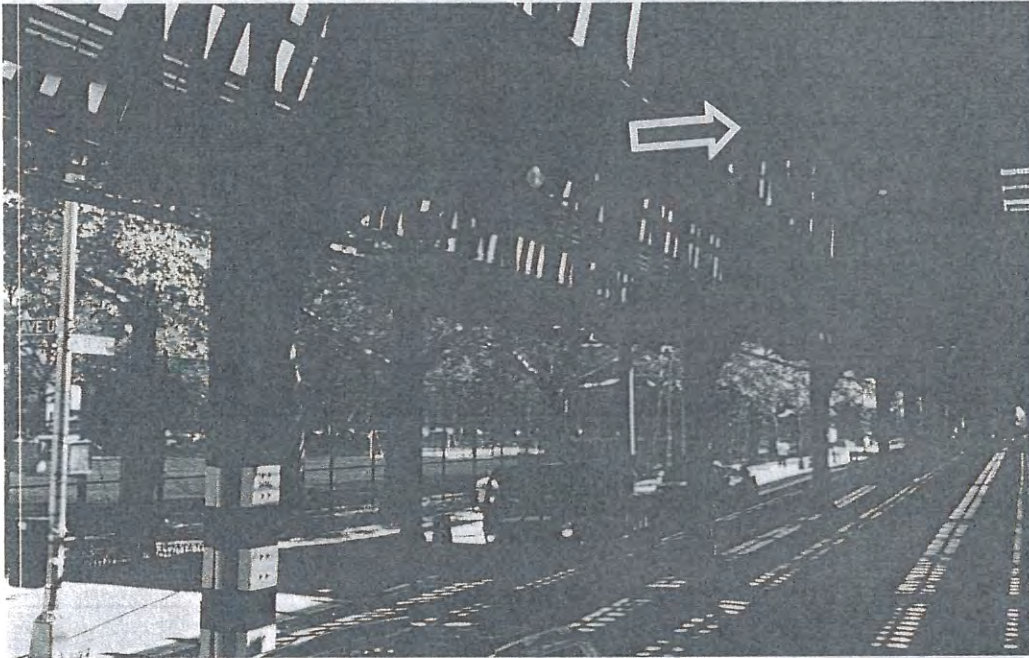


Install camera and the tag reader on the City DOT owned street traffic light pole shown. The equipment will capture traffic at the intersection of Stillwell Ave at Neptune Ave. Power to the equipment will be supplied at the street light pole



## DHS Environmental Review for Costal Storm Evacuation Routes

Location ID # 314630811830: Stillwell Ave @ Ave U



Install camera and the tag reader on the MTA overpass structure shown. The equipment will capture traffic at the intersection of Stillwell Ave at Avenue U. Power to the equipment will be supplied at the city DOT owned street light pole



## DHS Environmental Review for Costal Storm Evacuation Routes

Location ID # 38183083630: Stillwell Ave @ Surf Ave

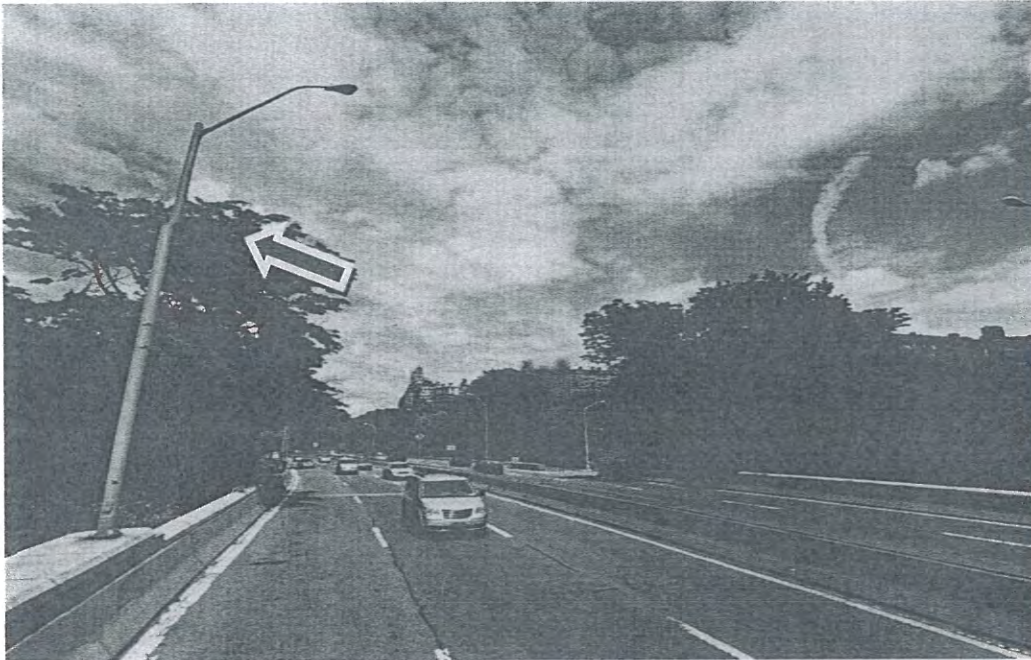


Install camera and the tag reader on the City DOT owned street traffic light pole shown. The equipment will capture traffic at the intersection of Stillwell Ave at Surf Ave. Power to the equipment will be supplied at the street light pole



## DHS Environmental Review for Costal Storm Evacuation Routes

Location ID # 11111635350: West side highway @ W 79 St

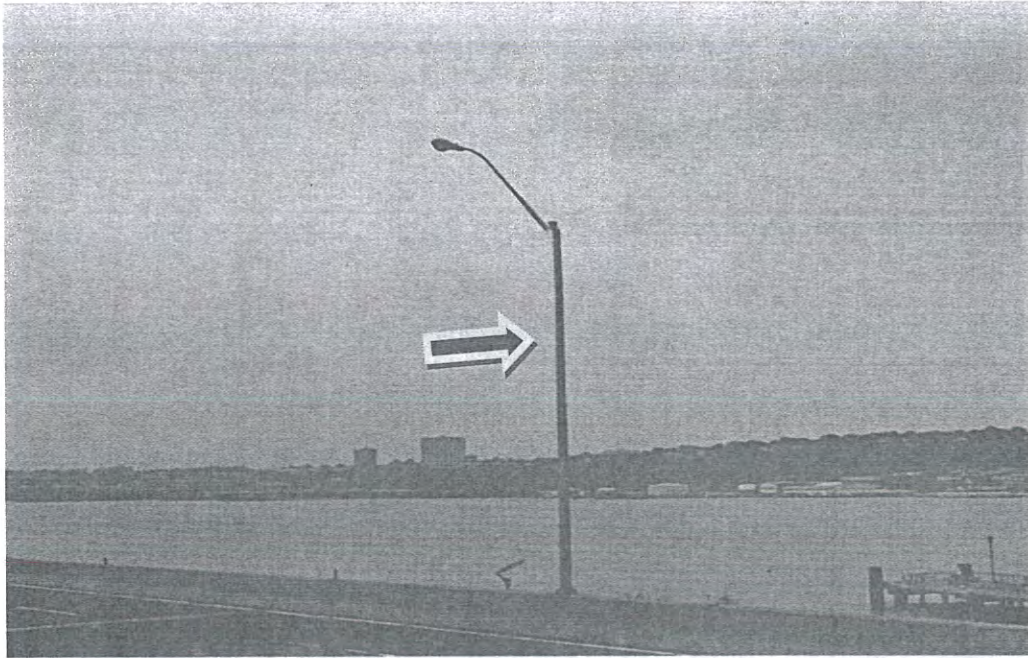


Install camera and the tag reader on the City DOT owned street traffic light pole shown. The equipment will capture traffic at the intersection of West Side Highway at W 79 Street. Power to the equipment will be supplied at the street light pole



## DHS Environmental Review for Costal Storm Evacuation Routes

Location ID # 11111636270: West Side Highway @ W 125 St



Install camera and the tag reader on the City DOT owned street traffic light pole shown. The equipment will capture traffic at the intersection of West Side Highway at W 125 Street. Power to the equipment will be supplied at the street light pole



## DHS Environmental Review for Costal Storm Evacuation Routes

Location ID # 12969011116: West side Highway @ W 96 St



Install camera and the tag reader on the City DOT owned street traffic light pole shown. The equipment will capture traffic at the intersection of West Side Highway at W 96 Street. Power to the equipment will be supplied at the street light pole



# DHS Environmental Review for Costal Storm Evacuation Routes

Location ID	CCTV ID	Detector ID	Equipment Type	Comm. Type	Artery	Cross St	Borough
11111633330		DET00011	Tag Reader	NYCWIN	West Side Highway (Rt 9 A)	79 St	Manhattan
12969011116		DET00012	Tag Reader	NYCWIN	West Side Highway (Rt 9 A)	96 St	Manhattan
11111636270		DET00013	Tag Reader	NYCWIN	West Side Highway (Rt 9 A)	123 St	Manhattan
29A00000007		DET00021	Tag Reader	NYCWIN	Henry Hudson Pkwy	City line	Bronx
2907H000001		DET00022	Tag Reader	NYCWIN	Bronx River Pkwy	City Line	Bronx
21X00000001		DET00023	Tag Reader	NYCWIN	Hutchinson River Pkwy	City Line	Bronx
43742060810	CAM00041	DET00041	Tag Reader & CCTV	NYCWIN	Rockaway Blvd	Brookville Blvd	Queens
44489060810	CAM00042	DET00042	Tag Reader & CCTV	NYCWIN	Rockaway Blvd	Nassau Expressway	Queens
46289060810	CAM00043	DET00043	Tag Reader & CCTV	NYCWIN	Rockaway Blvd	Belt Parkway	Queens
44089006490	CAM00044	DET00044	Tag Reader & CCTV	NYCWIN	Cross Bay Blvd	W 20 Rd	Queens
44089003290	CAM00043	DET00043	Tag Reader & CCTV	NYCWIN	Cross Bay Blvd	W 6 Rd	Queens
44089000000	CAM00046	DET00046	Tag Reader & CCTV	NYCWIN	Cross Bay Blvd	Jamacia Wildlife	Queens
44089097240	CAM00047	DET00047	Tag Reader & CCTV	NYCWIN	Cross Bay Blvd	North Channel Bridge	Queens
44089023690	CAM00048	DET00048	Tag Reader & CCTV	NYCWIN	Cross Bay Blvd	136 Ave	Queens
44089060810	CAM00049	DET00049	Tag Reader & CCTV	NYCWIN	Cross Bay Blvd	Rockaway Blvd	Queens
44089031090	CAM000410	DET000410	Tag Reader & CCTV	NYCWIN	Cross Bay Blvd	Jamacia Ave	Queens
34093000330	CAM00031	DET00031	Tag Reader & CCTV	NYCWIN	Flatbush Ave	Aviator Sports Complex	Brooklyn
34093040937	CAM00032	DET00032	Tag Reader & CCTV	NYCWIN	Flatbush Ave	Toys "R" US parking lot	Brooklyn
31463040930	CAM00033	DET00033	Tag Reader & CCTV	NYCWIN	Flatbush Ave	Ave U	Brooklyn
34363040930	CAM00034	DET00034	Tag Reader & CCTV	NYCWIN	Flatbush Ave	Flimmore Ave	Brooklyn
34093054090	CAM00033	DET00033	Tag Reader & CCTV	NYCWIN	Flatbush Ave	Kings Highway	Brooklyn
36773073830	CAM00036	DET00036	Tag Reader & CCTV	NYCWIN	Ocean Parkway	Surf Ave	Brooklyn
36773077030	CAM00037	DET00037	Tag Reader & CCTV	NYCWIN	Ocean Parkway	Belt Parkway	Brooklyn
31478067730	CAM00038	DET00038	Tag Reader & CCTV	NYCWIN	Ocean Parkway	Ave X	Brooklyn
31463067730	CAM00039	DET00039	Tag Reader & CCTV	NYCWIN	Ocean Parkway	Ave U	Brooklyn
33403067730	CAM000310	DET000310	Tag Reader & CCTV	NYCWIN	Ocean Parkway	Kings Highway	Brooklyn
38183083630	CAM000311	DET000311	Tag Reader & CCTV	NYCWIN	Stillwell Ave	Surf Ave	Brooklyn
36423081830	CAM000311	DET000311	Tag Reader & CCTV	NYCWIN	Stillwell Ave	Neptune Ave	Brooklyn
31463081830	CAM000312	DET000312	Tag Reader & CCTV	NYCWIN	Stillwell Ave	Ave U	Brooklyn
33410042430	CAM00031	DET00031	Tag Reader & CCTV	NYCWIN	Hylan Blvd	Page Ave	Staten Island
33410047300	CAM00032	DET00032	Tag Reader & CCTV	NYCWIN	Hylan Blvd	Sequine Ave	Staten Island
33410033630	CAM00033	DET00033	Tag Reader & CCTV	NYCWIN	Hylan Blvd	Huguenot Ave	Staten Island
33410031610	CAM00034	DET00034	Tag Reader & CCTV	NYCWIN	Hylan Blvd	Arden Ave	Staten Island
33410044730	CAM00035	DET00035	Tag Reader & CCTV	NYCWIN	Hylan Blvd	Richmond Ave	Staten Island
33410031290	CAM00036	DET00036	Tag Reader & CCTV	NYCWIN	Hylan Blvd	Guyana Ave	Staten Island
33410039200	CAM00037	DET00037	Tag Reader & CCTV	NYCWIN	Hylan Blvd	Midland Ave	Staten Island
33410047130	CAM00038	DET00038	Tag Reader & CCTV	NYCWIN	Hylan Blvd	Seaview Ave	Staten Island
33496034100	CAM00039	DET00039	Tag Reader & CCTV	NYCWIN	Hylan Blvd	Stands Lane /West Fingerboard	Staten Island
33410017400	CAM000310	DET000310	Tag Reader & CCTV	NYCWIN	Hylan Blvd	Lily Pond Ave/Bay st	Staten Island
46083033130	CAM000313	DET000313	Tag Reader & CCTV	NYCWIN	Beach Channel Drive	B 169 St	Queens
43329033090	CAM000411	DET000411	Tag Reader & CCTV	NYCWIN	Beach Channel Drive	B 140 St	Queens
43329033310	CAM000412	DET000412	Tag Reader & CCTV	NYCWIN	Beach Channel Drive	B 101 St	Queens
43304033290	CAM000413	DET000413	Tag Reader & CCTV	NYCWIN	Beach Channel Drive	B 90 St	Queens
43139033290	CAM000414	DET000414	Tag Reader & CCTV	NYCWIN	Beach Channel Drive	B 34 St	Queens
43329029560	CAM000415	DET000415	Tag Reader & CCTV	NYCWIN	Beach Channel Drive	B 32 St	Queens
43329036090	CAM000416	DET000416	Tag Reader & CCTV	NYCWIN	Beach Channel Drive	Mott Ave	Queens
43372062200	CAM000417	DET000417	Tag Reader & CCTV	NYCWIN	Shore Front Parkway	B 108 St	Queens
43324062200	CAM000418	DET000418	Tag Reader & CCTV	NYCWIN	Shore Front Parkway	B 93 St	Queens
43301062200	CAM000419	DET000419	Tag Reader & CCTV	NYCWIN	Shore Front Parkway	B 73 St	Queens
46169000000	CAM000420	DET000420	Tag Reader & CCTV	NYCWIN	Seagirt Blvd	B 32 St	Queens
46169029890	CAM000421	DET000421	Tag Reader & CCTV	NYCWIN	Seagirt Blvd	B 9 St	Queens
21932337870	CAM00024	DET00024	Tag Reader & CCTV	NYCWIN	Pelham Flwy (Shore Rd)	City Island Bridge	Bronx
23771066880	CAM00025	DET00025	Tag Reader & CCTV	NYCWIN	Pelham Flwy	Hutchinson River Parkway	Bronx
31282025730	CAM00026	DET00026	Tag Reader & CCTV	NYCWIN	Pelham Flwy	Bronx River Parkway/Boston rd	Bronx